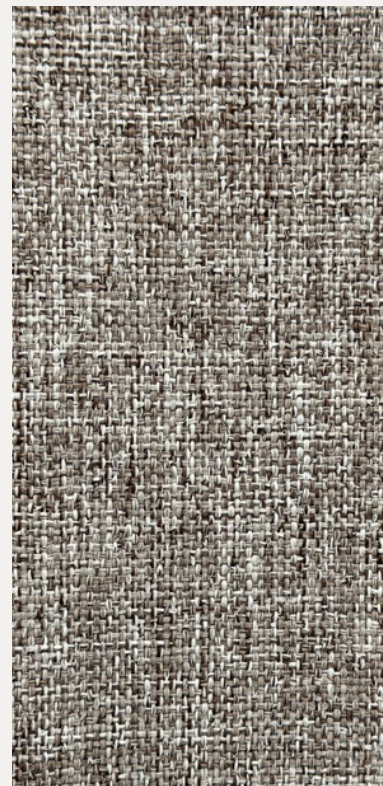


LILLEBY


BLACKOUT CURTAINS

100% POLYESTER
WEIGHT: 258 GR/M2 | WIDTH 300 CM



FABRICOEUR

Lilleby specification

| | | |
|--|---|-------------|
| Use: | Blackout curtains | |
| Composition: | 100% Polyester | |
| Weight (gr/m2): | 258 | |
| Width (cm): | 300 | |
| Martindale: | - | |
| Pilling (1-5): | - | |
| Dry rubbing (1-5): | - | |
| Wet rubbing (1-5): | - | |
| Colour fastness to light (1-8): | 4-5 | ISO 105-B02 |
| Shrinkage after washing: | <1,8% | |
| Flame retardant: | No | |
| Number of colours: | 7 | |
| Care instructions: |  | |
| Environment: | OEKO-TEX® STANDARD 100 | |
| Additional info: | Double sided | |

FABRICOEUR

Colour chart Lilleby



3



5



6



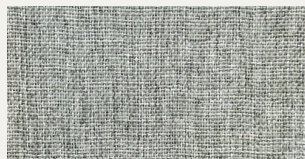
8



9



16



17

FABRICOEUR