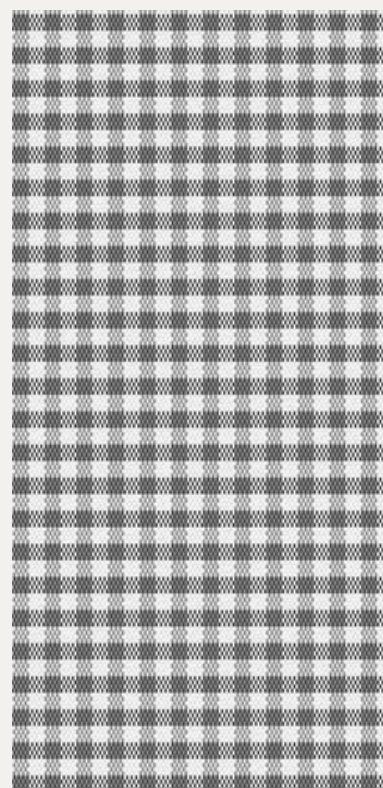
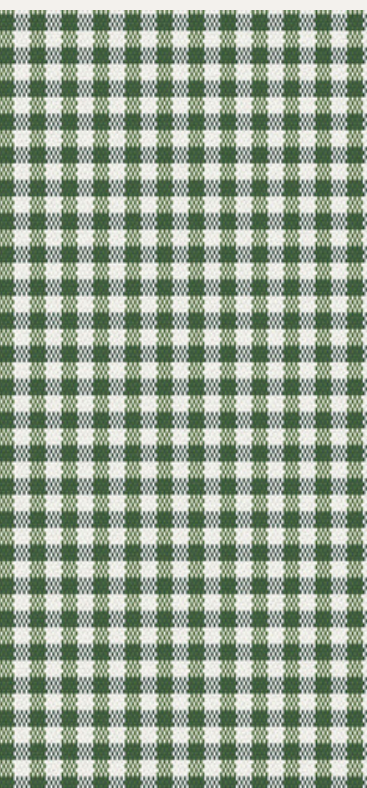


CLIO

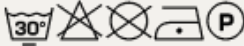
USED FOR CURTAINS & DECORATION

62% COTTON | 38% POLYESTER
WEIGHT: 200 GR/M2 | WIDTH 280 CM



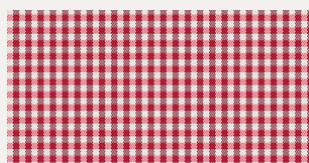
FABRICOEUR

Clio specification

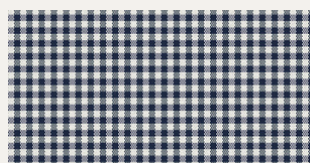
Use:	Curtains Decoration	
Composition:	62% Cotton 38% Polyester	
Weight (gr/m2):	200	
Width (cm):	280	
Martindale:	-	
Pilling (1-5):	4-5	ISO 12945-2
Dry rubbing (1-5):	-	
Wet rubbing (1-5):	-	
Colour fastness to light (1-8):	4-5	ISO 105-B02
Shrinkage after washing:	-	
Flame retardant:	No	
Number of colours:	11	
Care instructions:		
Environment:	OEKO-TEX® STANDARD 100	
Additional info:	Part of the Hotel collection	

FABRICOEUR

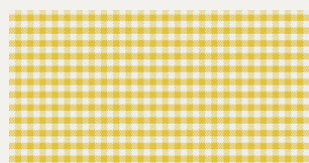
Colour chart Clio



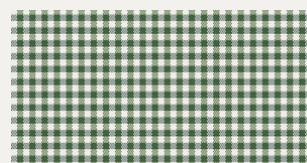
1



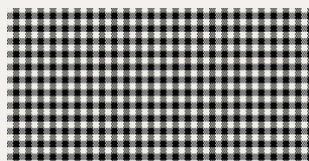
2



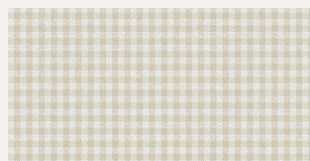
3



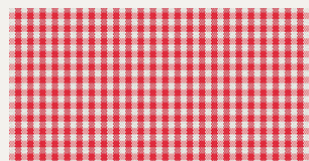
4



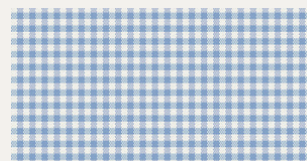
5



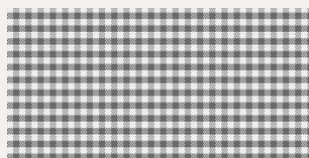
6



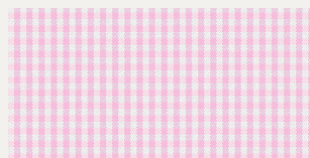
15



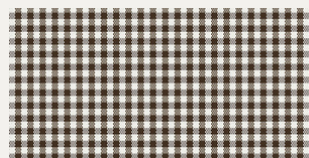
16



24



29



33

FABRICOEUR