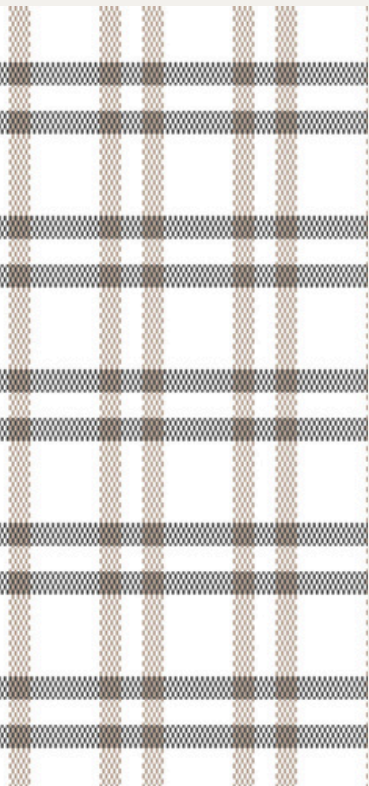


CHILE

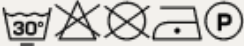
USED FOR CURTAINS & DECORATION

62% COTTON | 38% POLYESTER
WEIGHT: 200 GR/M2 | WIDTH 280 CM



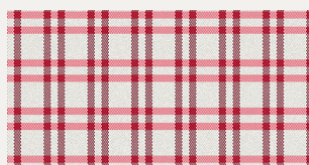
FABRICOEUR

Chile specification

| | | |
|---------------------------------|---|-------------|
| Use: | Curtains Decoration | |
| Composition: | 62% Cotton 38% Polyester | |
| Weight (gr/m2): | 200 | |
| Width (cm): | 280 | |
| Martindale: | | |
| Pilling (1-5): | 4-5 | ISO 12945-2 |
| Dry rubbing (1-5): | - | |
| Wet rubbing (1-5): | - | |
| Colour fastness to light (1-8): | 4-5 | ISO 105-B02 |
| Shrinkage after washing: | - | |
| Flame retardant: | No | |
| Number of colours: | 11 | |
| Care instructions: |  | |
| Environment: | OEKO-TEX® STANDARD 100 | |
| Additional info: | Part of the Hotel collection | |

FABRICOEUR

Colour chart Chile



1



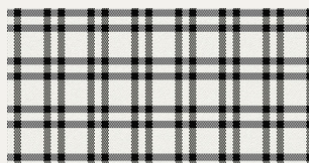
2



3



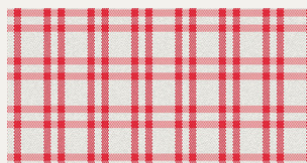
4



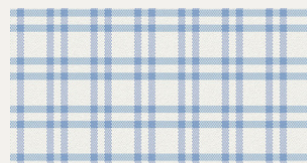
5



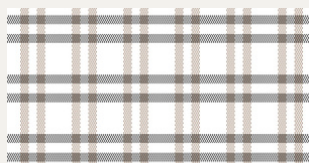
6



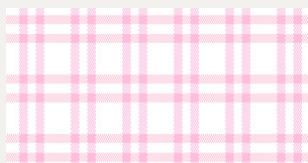
15



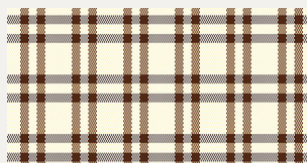
16



24



29



33

FABRICOEUR