

BODA






USED FOR FURNITURE

100% POLYURETHANE
WEIGHT: 390 GR/M2 | WIDTH 140 CM



FABRICOEUR

Boda specification

Use:	Furniture	
Composition:	100% Polyurethane	
Weight (gr/m2):	390	
Width (cm):	140	
Martindale:	100 000	ISO 12947-2
Pilling (1-5):	4-5	ISO 12945-2
Dry rubbing (1-5):	4-5	ISO 105-X12
Wet rubbing (1-5):	4-5	ISO 105-X12
Colour fastness to light (1-8):	6	ISO 105-B02
Shrinkage after washing:	-	
Flame retardant:	On request	
Number of colours:	31	
Care instructions:	    	
Environment:	OEKO-TEX® STANDARD 100	
Additional info:	-	

FABRICOEUR

Colour chart Boda

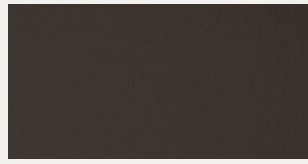


FABRICOEUR

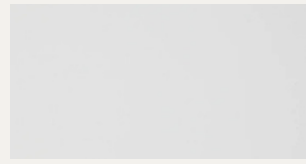
Colour chart Boda



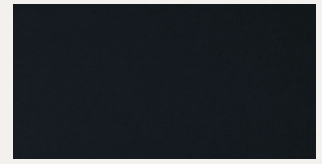
29



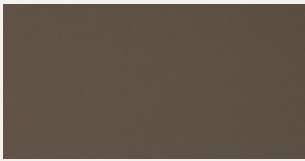
30



31



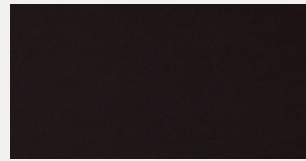
32



34



35



66

FABRICOEUR