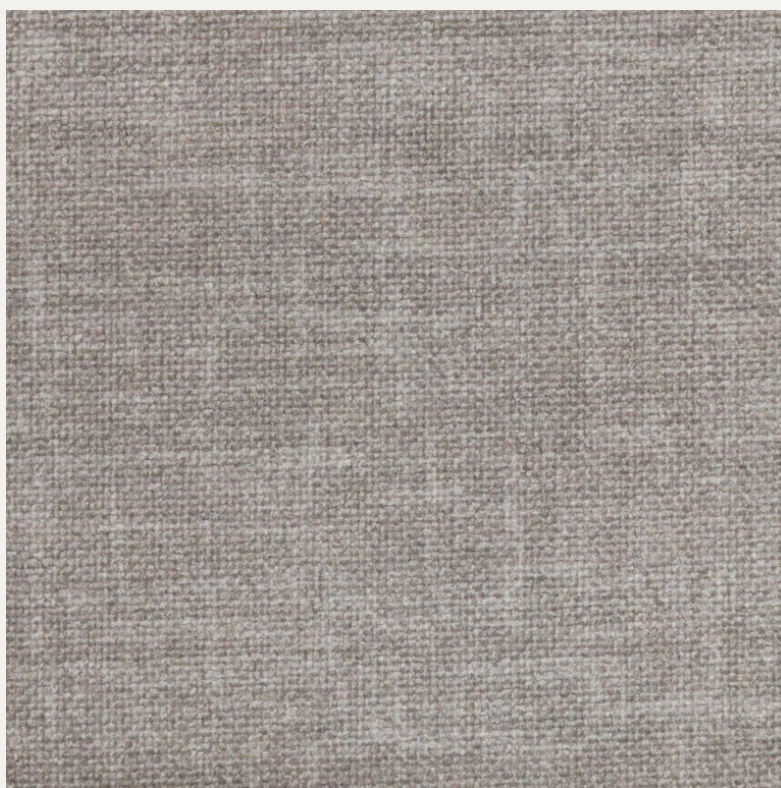


# HORRED | SKENE | VEDDIGE

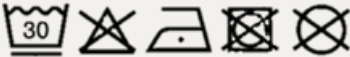
BLACKOUT COLLECTION  
USED FOR CURTAINS

100% POLYESTER FR  
WEIGHT: 430 GR/M2 | WIDTH 295 CM



FABRICOEUR

# Blackout Collection specification

<b>Use:</b>	Curtains	
<b>Composition:</b>	100% Polyester FR	
<b>Weight (gr/m2):</b>	430	
<b>Width (cm):</b>	295	
<b>Martindale:</b>	-	
<b>Pilling (1-5):</b>	4-5	ISO 12945-2
<b>Dry rubbing (1-5):</b>	-	
<b>Wet rubbing (1-5):</b>	-	
<b>Colour fastness to light (1-8):</b>	5	ISO 105-B02
<b>Shrinkage after washing:</b>	-	
<b>Flame retardant:</b>	Yes	EN 13773
<b>Number of colours:</b>	11	
<b>Care instructions:</b>		
<b>Environment:</b>	OEKO-TEX® STANDARD 100	
<b>Additional info:</b>	Blackout	

FABRICOEUR

# Colour chart Blackout Collection

## HORRED



1



2

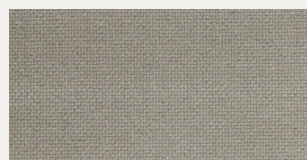
## SKENE



0



3



12



13



32



44



101

## VEDDIGE



3



13

FABRICOEUR