



# Salò

MADE IN ITALY

CHIOCCARELLO

FABRICS SINCE 1962



SLW 11



SLW 39



SLW 57



SLW 53



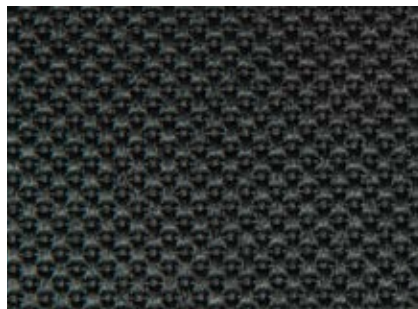
SLW 42



SLW 60



SLW 26



SLW 52



SLW 66



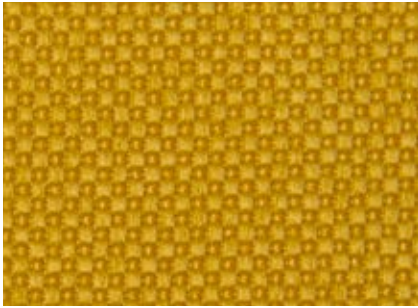
SLW 02



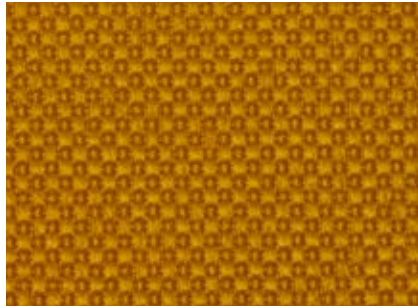
SLW 01



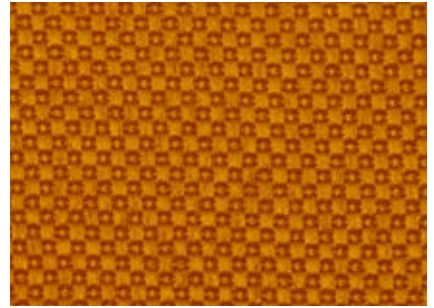
SLW 50



SLW 68



SLW 15



SLW 59



SLW 16



SLW 54



SLW 12



SLW 61



SLW 64



SLW 63



SLW 65



SLW 62



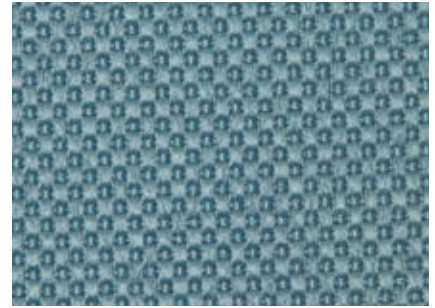
SLW 51



SLW 40



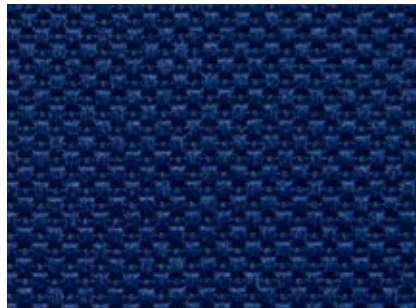
SLW 29



SLW 27



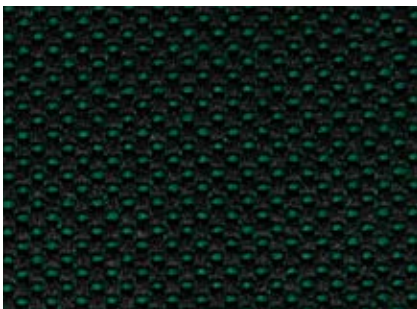
SLW 58



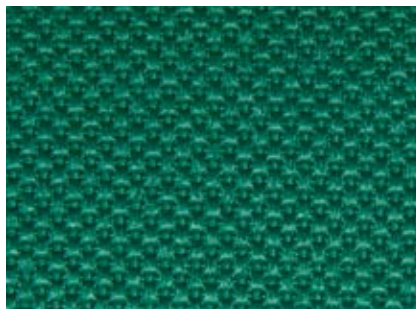
SLW 69



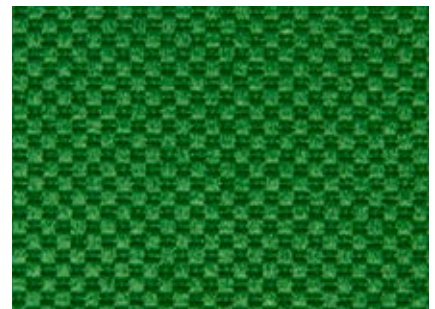
SLW 56



SLW 04



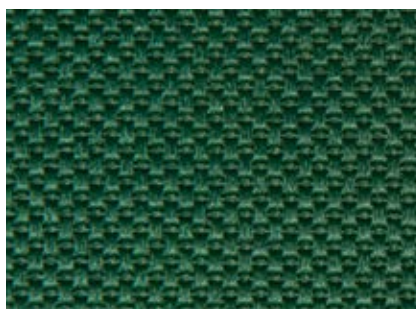
SLW 67



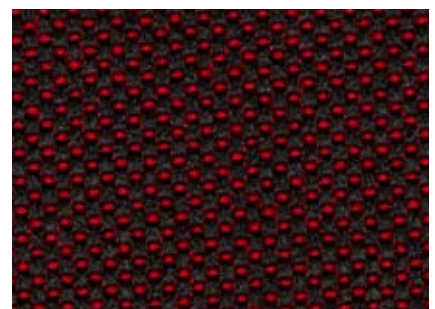
SLW 55



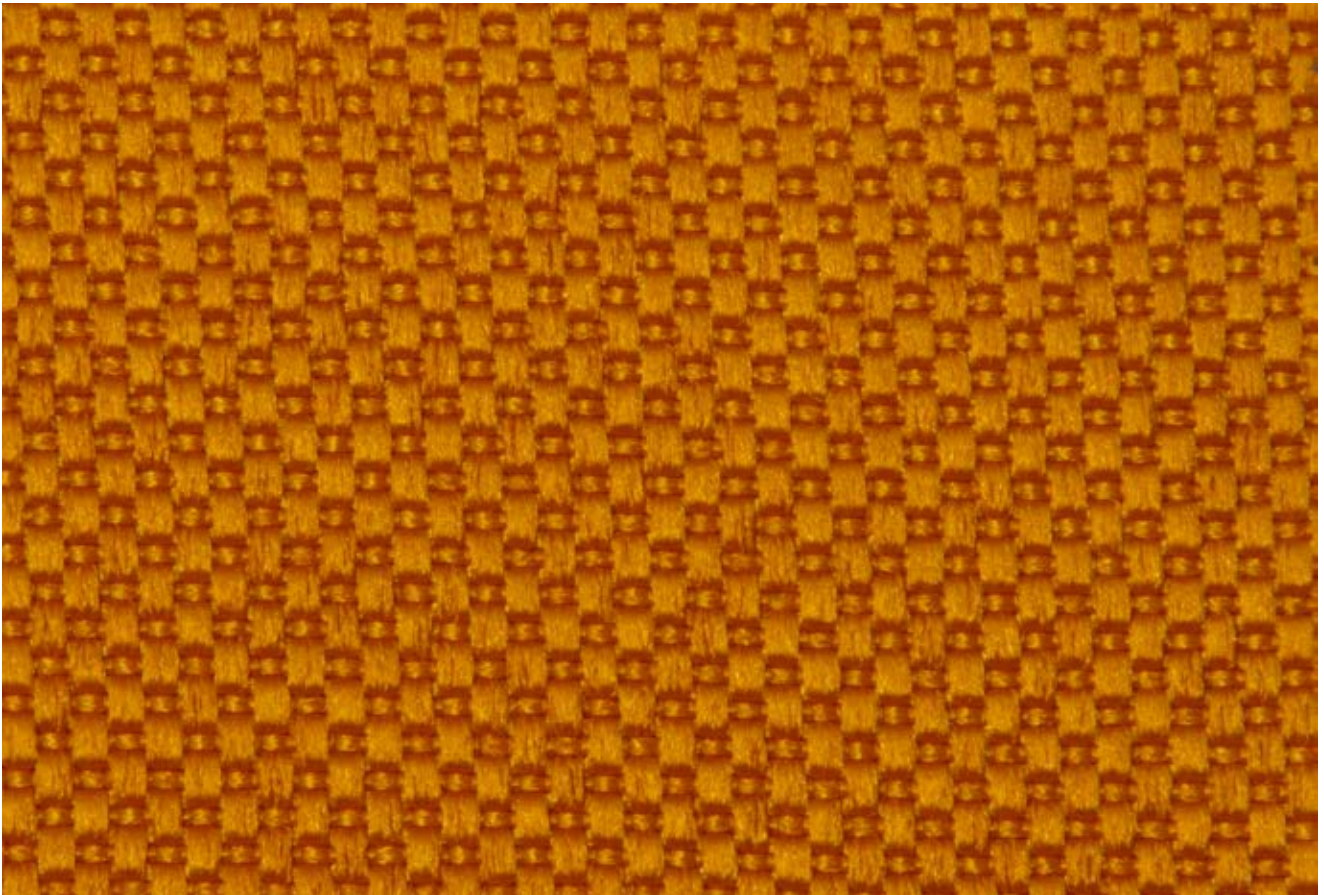
SLW 33



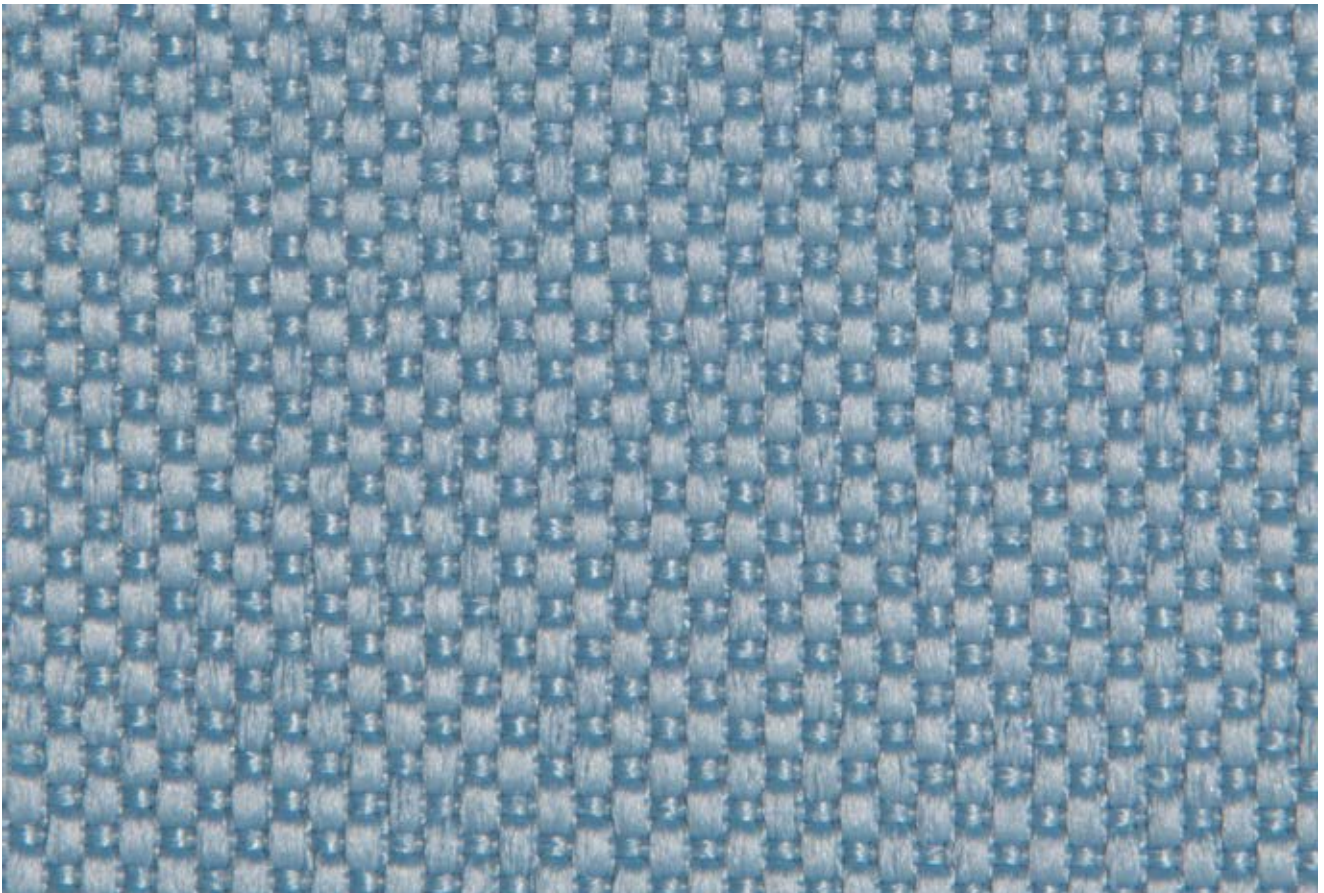
SLW 30



SLW 03



SLW 59 - LATO A



SLW 40 - LATO B



IT	EN	DE	F	E
<b>COMPOSIZIONE</b> 100% Poliestere Post-Consumers	<b>COMPOSITION</b> 100% Polyester Post-Consumers	<b>ZUSAMMENSETZUNG</b> 100% Polyester Post-Consumers	<b>MATERIALE</b> 100% Polyester Post-Consumers	<b>COMPOSICIÓN</b> 100% Poliéster Post-Consumers
<b>PESO</b> 380 gr/m2 ± 10 (17,15 oz/lin.yd)	<b>WEIGHT</b> 380 gr/m2 ± 10 (17,15 oz/lin.yd)	<b>GEWICHT</b> 380 gr/m2 ± 10 (17,15 oz/lin.yd)	<b>POIDS</b> 380 gr/m2 ± 10 (17,15 oz/lin.yd)	<b>PESO</b> 380 gr/m2 ± 10 (17,15 oz/lin.yd)
<b>ALTEZZA</b> 140 cm ± 2 (55")	<b>WIDTH</b> 140 cm ± 2 (55")	<b>BREITE</b> 140 cm ± 2 (55")	<b>LONGUEUR</b> 140 cm ± 2 (55")	<b>ANCHO</b> 140 cm ± 2 (55")
<b>LUNGHEZZA ROTOLO</b> 25 ml ± 10% (27,34 yd)	<b>ROLL LENGHT</b> 25 ml ± 10% (27,34 yd)	<b>ROLLE LÄNGE</b> 25 ml ± 10% (27,34 yd)	<b>LONGUEUR ROTULEA</b> 25 ml ± 10% (27,34 yd)	<b>LONGITUD ROLLO</b> 25 ml ± 10% (27,34 yd)
<b>RESISTENZA ABRASIONE</b> > 150.000 cicli Martindale	<b>ABRASION RESISTANCE</b> > 150.000 Martindale cycles	<b>SCHUEFERFESTIGKEIT</b> > 150.000 Martindale Scheuertouren	<b>RÉSISTANCE À L'ABRASION</b> > 150.000 Martindale tours	<b>RESISTENCIA A LA ABRASIÓN</b> > 150.000 Martindale ciclos
<b>Pilling: 4/5</b>	<b>Pilling: 4/5</b>	<b>Pilling: 4/5</b>	<b>Pilling: 4/5</b>	<b>Pilling: 4/5</b>
<b>RESISTENZA ALLA LUCE</b> 5	<b>LIGHT FASTNESS</b> 5	<b>LICHTECHTHEIT</b> 5	<b>SOLIDITÉ À LA LUMIÈRE</b> 5	<b>SOLIDEZ A LA LUZ</b> 5
<b>RESISTENZA ALLO SFREGAMENTO</b> Umido : 5 Secco : 5	<b>FASTNESS TO RUBBING</b> Wet : 5 Dry : 5	<b>REIBECHTHEIT</b> Nass : 5 Trocken : 5	<b>SOLIDITÉ AU FROTTEMENTV</b> Mouillé : 5 Sec : 5	<b>SOLIDEZ AL ROZAMIENTO</b> Húmedo : 5 Seco : 5

**FR TEST**

UNI 9175 Classe 11M • EN 1021-1 & 2:2014 • BS5852 Crib 5 • TB 117:2013 • NPFA 260:2019 • NF P 92-503-M1 • IMO • B1 • FAR JAR 25853-25855-25859



**ASSORBIMENTO ACUSTICO • ACOUSTIC ABSORPTION • SCHALLABSORPTIONS • ABSORPTION ACOUSTIQUE • ABSORCIÓN ACÚSTICA**  
UNI EN ISO 354 : 2003

**COLORE**

Leggere differenze di colore fra una partita e l'altra sono da considerarsi normali.

**PULIZIA**

Passare l'aspirapolvere regolarmente.  
Strofinare con un panno umido usando un sapone per tappezzeria. Per una pulizia più profonda, utilizzare un lavaggio a secco professionale.

**COLOUR**

Slight color differences between one lot and another have to be considered within commercial tolerance.

**CLEANING**

Vacuum regularly. Wipe with a damp cloth using a upholstery soap. For deeper cleaning use professionally dry clean.

**FARBABWEICHUNGEN**

Leichte farbunterschiede sind zwischen zwei Partien als normal zu betrachten.

**REINIGUNG**

Staubsaugen Sie regelmäßig. Mit einem feuchten Tuch und Polsterseife reinigen. Für eine gründlichere Reinigung verwenden Sie eine professionelle chemische Reinigung.

**COLORIS**

Légères différences de couleur entre un lot et l'autre doivent être considérés comme étant normales.

**NETTOYAGE**

Passez régulièrement l'aspirateur. Nettoyer avec un chiffon humide et du savon d'ameublement. Pour un nettoyage plus approfondi, faites appel à un nettoyeur à sec professionnel.

**COLOR**

Ligeras diferencias de color entre un lote y el otro son normales.

**LIMPIEZA**

Aspire regularmente. Limpiar con un paño húmedo y jabón para tapicería. Para una limpieza más profunda, utilice una tintorería profesional.

