



# Madrid Madrid 3D

MADE IN ITALY

CHIOCCARELLO

FABRICS SINCE 1962

Tessuti  
dall'anima  
tecnica, testati  
e certificati  
per sicurezza,  
resistenza e  
sostenibilità  
secondo i più  
elevati standard  
internazionali.

**EN**

Fabrics with a technical soul, tested and certified for safety, resistance and sustainability according to the highest international standards.

**F**

Des tissus à l'âme technique, testé et certifié pour la sécurité, résistance et durabilité selon les normes internationales les plus élevées.

**D**

Stoffe mit technischer Seele, geprüft und zertifiziert auf Sicherheit, Widerstandsfähigkeit und Nachhaltigkeit nach den höchsten internationalen Standards.

**E**

Tejidos con alma técnica, probado y certificado para seguridad, Resistencia y sostenibilidad según los más altos estándares internacionales.

MADE IN ITALY

CHIOCCARELLO

FABRICS SINCE 1962

# Madrid / Madrid 3D

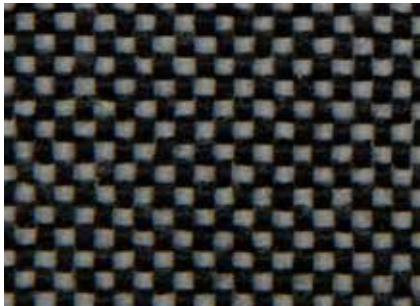
MADE IN ITALY  
**CHIOCCARELLO**  
FABRICS SINCE 1962



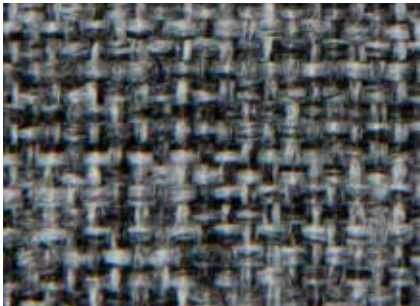
MA 515



MA 522



MA 519



MA 513



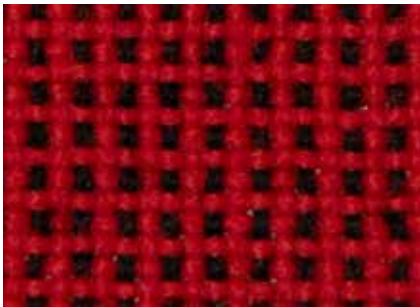
MA 517



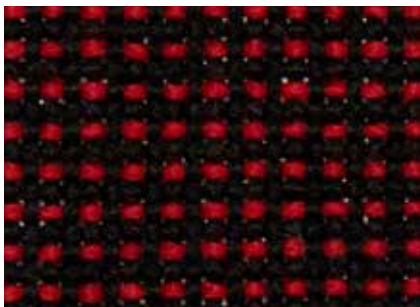
MA 511



MA 502



MA 523



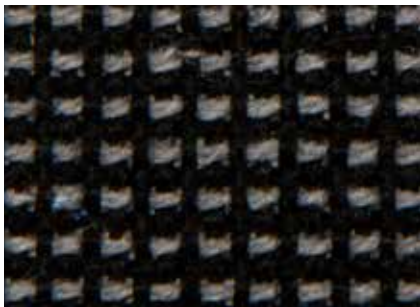
MA 520



MA 514



MA 534



MA 518

# Madrid / Madrid 3D

MADE IN ITALY  
**CHIOCCARELLO**  
FABRICS SINCE 1962



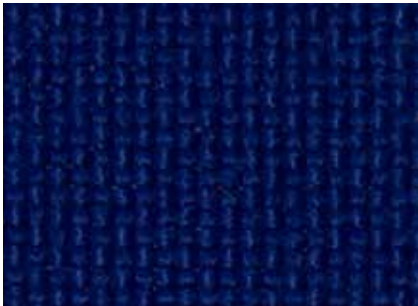
MA 505



MA 530



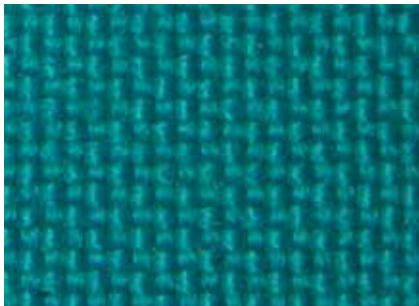
MA 527



MA 501



MA 529



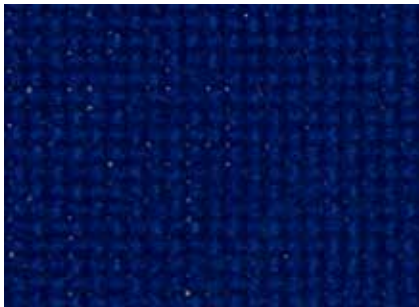
MA 509



MA 507



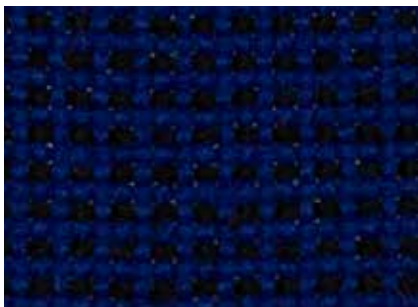
MA 504



MA 526



MA 516



MA 521

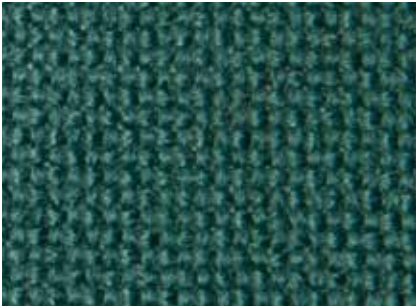


MA 510

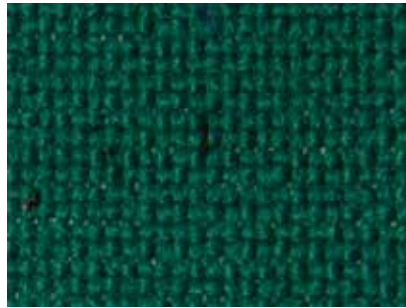
# Madrid / Madrid 3D

\*\* colori disponibili in Madrid 3D

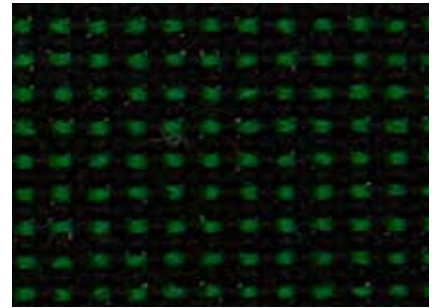
MADE IN ITALY  
**CHIOCCARELLO**  
FABRICS SINCE 1962



MA 512



MA 535



MA 524



MA 503



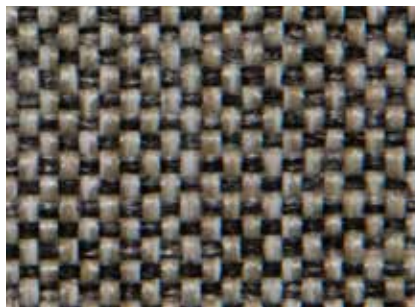
MA 506



\*\* MA 565



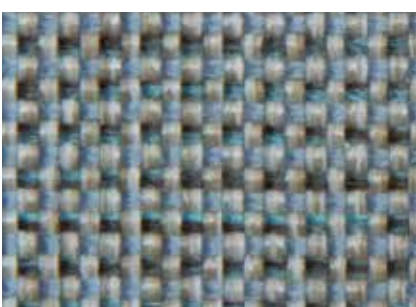
\*\* MA 558



\*\* MA 555



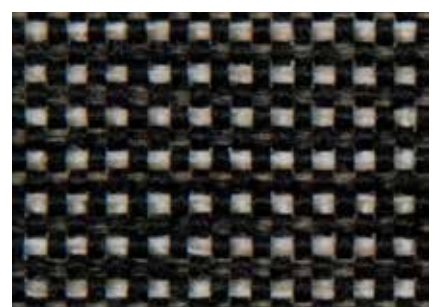
\*\* MA 549



\*\* MA 564



\*\* MA 552

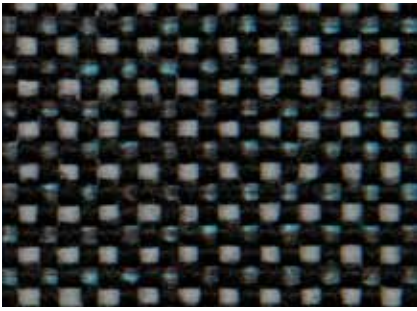


\*\* MA 536

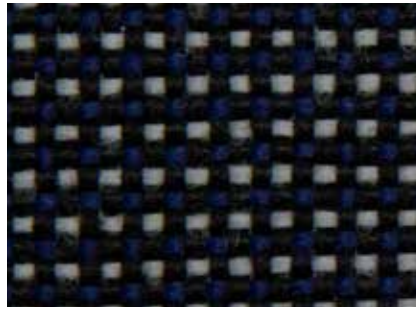
# Madrid 3D

\*\* colori disponibili in Madrid 3D

MADE IN ITALY  
**CHIOCCARELLO**  
FABRICS SINCE 1962



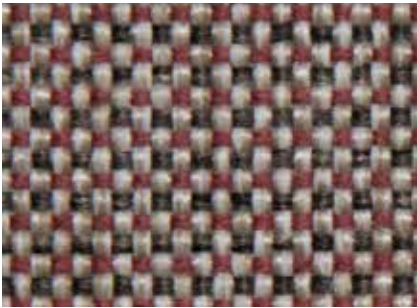
\*\* MA 540



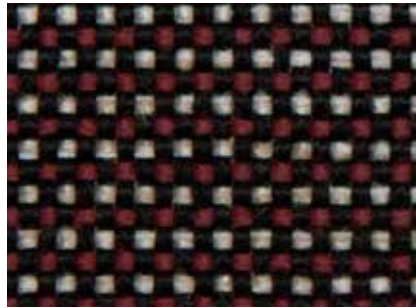
\*\* MA 548



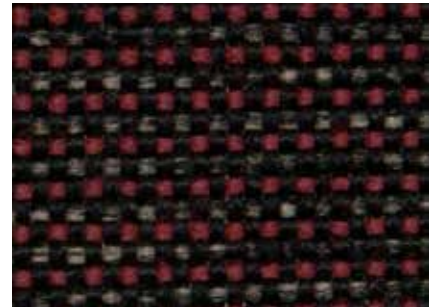
\*\* MA 547



\*\* MA 561



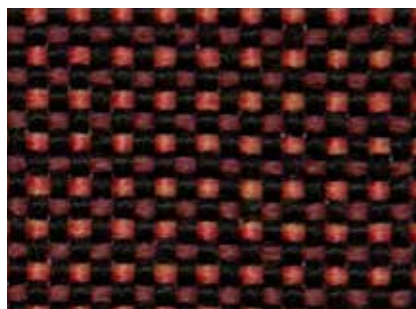
\*\* MA 545



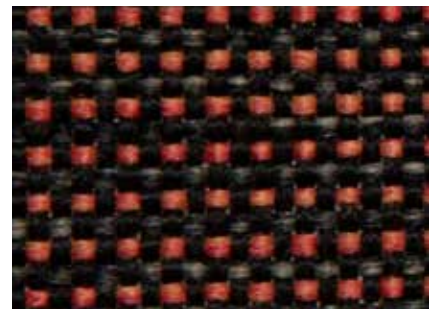
\*\* MA 537



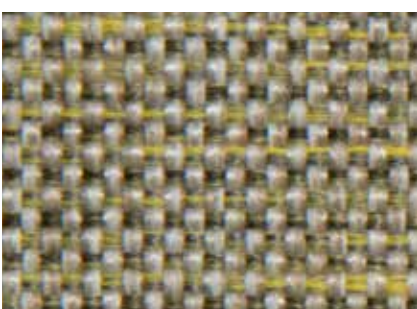
\*\* MA 556



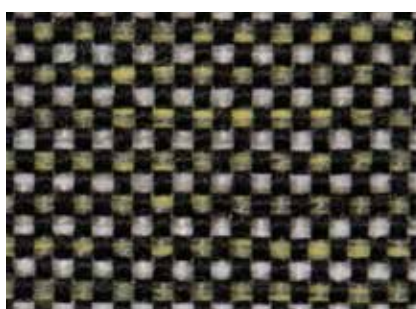
\*\* MA 543



\*\* MA 542



\*\* MA 562



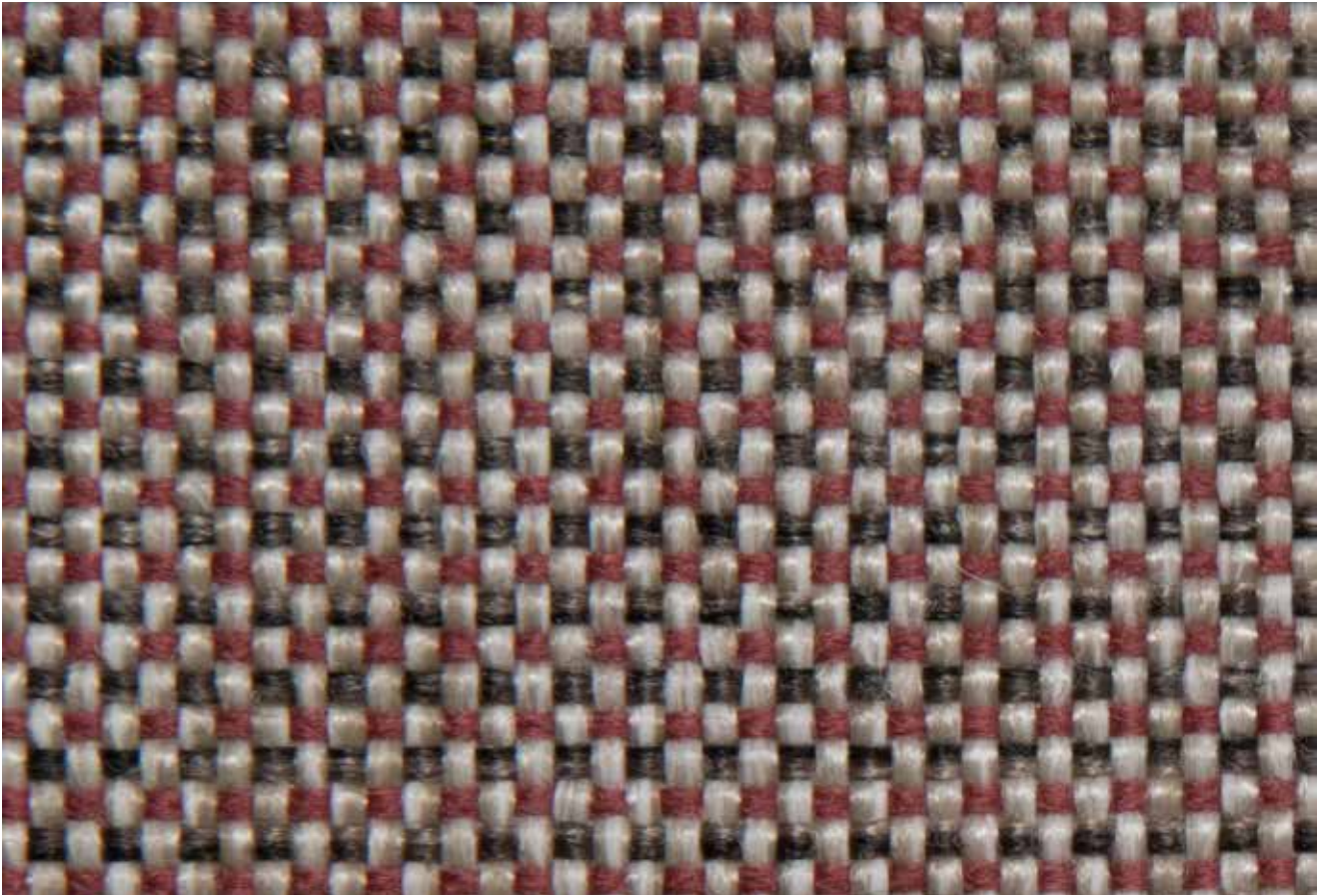
\*\* MA 538



\*\* MA 539

# Madrid / Madrid 3D

MADE IN ITALY  
**CHIOCCARELLO**  
FABRICS SINCE 1962



\*\* MA 561

MADRID 3D



MA 505

# Madrid / Madrid 3D

29 COLORS



MADE IN ITALY  
**CHIOCCARELLO**  
FABRICS SINCE 1962

IT	EN	DE	F	E
<b>COMPOSIZIONE</b> 100% Polipropilene	<b>COMPOSITION</b> 100% Polypropylene	<b>ZUSAMMENSETZUNG</b> 100% Polypropylene	<b>MATERIALE</b> 100% Polypropylène	<b>COMPOSICIÓN</b> 100% Polipropileno
<b>PESO</b> 250 gr/m2 ± 10 (11,30 oz/lin.yd)	<b>WEIGHT</b> 250 gr/m2 ± 10 (11,30 oz/lin.yd)	<b>GEWICHT</b> 250 gr/m2 ± 10 (11,30 oz/lin.yd)	<b>POIDS</b> 250 gr/m2 ± 10 (11,30 oz/lin.yd)	<b>PESO</b> 250 gr/m2 ± 10 (11,30 oz/lin.yd)
<b>ALTEZZA</b> 140 cm ± 2 (55")	<b>WIDTH</b> 140 cm ± 2 (55")	<b>BREITE</b> 140 cm ± 2 (55")	<b>LANGEUR</b> 140 cm ± 2 (55")	<b>ANCHO</b> 140 cm ± 2 (55")
<b>LUNGHEZZA ROTOLO</b> 50 ml ± 10% (54,68 yd)	<b>ROLL LENGTH</b> 50 ml ± 10% (54,68 yd)	<b>ROLLE LÄNGE</b> 50 ml ± 10% (54,68 yd)	<b>LONGUEUR ROTELEA</b> 50 ml ± 10% (54,68 yd)	<b>LONGITUD ROLLO</b> 50 ml ± 10% (54,68 yd)
<b>RESISTENZA ABRASIONE</b> > 100.000 cicli Martindale	<b>ABRASION RESISTANCE</b> > 100.000 Martindale cycles	<b>SCHEUERFESTIGKEIT</b> > 100.000 Martindale Scheuertouren	<b>RÉSISTANCE À L'ABRASION</b> > 100.000 Martindale tours	<b>RESISTENCIA A LA ABRASIÓN</b> > 100.000 Martindale ciclos
<b>Pilling: 5</b>	<b>Pilling: 5</b>	<b>Pilling: 5</b>	<b>Pilling: 5</b>	<b>Pilling: 5</b>
<b>RESISTENZA ALLA LUCE</b> 5	<b>LIGHT FASTNESS</b> 5	<b>LICHTECHTHEIT</b> 5	<b>SOLIDITÉ À LA LUMIÈRE</b> 5	<b>SOLIDEZ A LA LUZ</b> 5
<b>RESISTENZA ALLO SFREGAMENTO</b> Umido : 4/5 Secco : 4/5	<b>FASTNESS TO RUBBING</b> Wet : 4/5 Dry : 4/5	<b>REIBECHTHEIT</b> Nass: 4/5 Trocken: 4/5	<b>SOLIDITÉ AU FROTTEMENTV</b> Mouillé: 4/5 Sec: 4/5	<b>SOLIDEZ AL ROZAMIENTO</b> Húmedo: 4/5 Seco : 4/5



Solo su richiesta • Only on request • Nur Auf anfrage • Seulement sur demande • Sólo a petición :  
**IDROPELLENTE • WATER REPELLENCY • HYDROPHOBE • HYDROFUGEET • HIDRÓFUGO**

## FR TEST

UNI 9175 Classe 11M • EN 1021-1 & 2:2014 • BS5852 Crib 5 • TB 117:2013 • IMO • F.A.R./JAR 25853-25855-25859 • EN 13823:2020 • EN ISO 11925-2:2020 • EN 13501-1:2019



**ASSORBIMENTO ACUSTICO • ACOUSTIC ABSORPTION • SCHALLABSORPTIONS • ABSORPTION ACOUSTIQUE •  
ABSORCIÓN ACÚSTICA**  
UNI EN ISO 354 : 2003

## COLORE

Leggere differenze di colore fra una partita e l'altra sono da considerarsi normali.

## PULIZIA

Passare l'aspirapolvere regolarmente.  
Strofinare con un panno umido usando un sapone per tappezzeria. Per una pulizia più profonda, utilizzare un lavaggio a secco professionale.

## COLOUR

Slight color differences between one lot and another have to be considered within commercial tolerance.

## CLEANING

Vacuum regularly. Wipe with a damp cloth using a upholstery soap. For deeper cleaning use professionally dry clean.

## FARBABWEICHUNGEN

Leichte farbunterschiede sind zwischen zwei Partien als normal zu betrachten.

## REINIGUNG

Staubsaugen Sie regelmäßig. Mit einem feuchten Tuch und Polsterseife reinigen. Für eine gründlichere Reinigung verwenden Sie eine professionelle chemische Reinigung.

## COLORIS

Légères différences de couleur entre un lot et l'autre doivent être considérés comme étant normales.

## NETTOYAGE

Passez régulièrement l'aspirateur. Nettoyer avec un chiffon humide et du savon d'ameublement. Pour un nettoyage plus approfondi, faites appel à un nettoyeur à sec professionnel.

## COLOR

Ligeras diferencias de color entre un lote y el otro son normales.

## LIMPIEZA

Aspire regularmente. Limpiar con un paño húmedo y jabón para tapicería. Para una limpieza más profunda, utilice una tintorería profesional.

